

## GENIUS TOOLS Model Processor

Make sure your CAD files comply with latest CAD company standards



Ensure CAD company standards!  
» Free Guest Mode: <http://mp.inneo.com>



# GENIUS TOOLS Model Processor

Make sure your CAD files comply with latest CAD company standards

Smooth and consistent processes constitute a competitive edge. But wherever inventory CAD data is processed new challenges arise: Company standards change, shortcomings from late developments and Creo versions remain. **GENIUS TOOLS Model Processor** identifies and eliminates these mismatches quickly and automatically.



## GENIUS TOOLS MODEL PROCESSOR PROVIDES

### GENIUS TOOLS Model Processor – edit any amount of data

GENIUS TOOLS Model Processor supports you consistently in standardising your inventory Creo Parametric data. Be it clearing up existing CAD data sets, consolidating CAD data (company acquisition) or preparation for CAD data management: With Model Processor you can automate time-consuming and error-prone manual tasks as well as generate reports, perform analyses, process data automatically within the file system or using PDM connectivity.

Also company standards need to be adopted for internal and external changes such as:

- new Creo Parametric version with additional capabilities
- enhanced classification of products
- additional or adjusted BOM fields when collaborating with other departments (e.g. commercial EDP), partners and customers especially abroad
- defined structures for use of design data in manufacturing or analysis

Usually, inventory data also is not revised on the basis of newly gained insights. **GENIUS TOOLS Model Processor** enables you to apply your increased know-how quickly to your existing data – and also most of all on huge amounts of data.

In order to update design data several factors can be edited, e.g.:

- finding duplicate file names
- start objects used
- parameter and material definition
- and many more

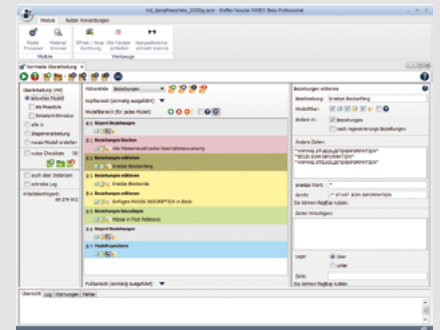
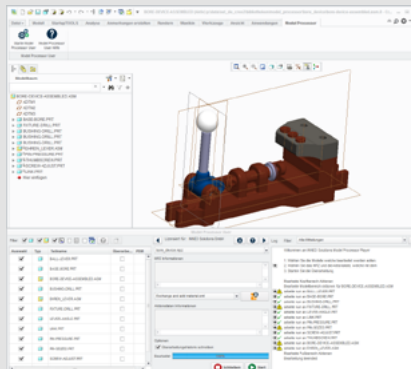
### GENIUS TOOLS Model Processor User – applying company standards consistently

GENIUS TOOLS Model Processor User enables your designers to apply all of Model Processor's functionality via an integrated solution in Creo Parametric along with their daily work.

Simple but impressive is its usage:

- The user starts Model Processor User directly from Creo,
- chooses the predefined action list
- and applies it to the models "in session".

CAD and system administrators can relieve their designers of a wide range of time consuming tasks by simply providing the action lists and at the same time guarantee that company standards are met automatically.



More than **180 actions** enable you to edit the different properties of your designs:

- parameters, relations, layers
- materials, units, accuracy, tolerances
- family tables (verify)
- representations, image creation, appearances

### Possible editing modes:

- apply to current model
- revise all models in memory or workspace
- edit a database from a PDM system (read a generated file name list) or from hard drive
- generate new models by applying the appropriate actions
- single step mode
- material browser
  - convert \*.mat to \*.mtl
  - material overview (table)
  - add material parameter
  - simple editing via tables

### GENIUS TOOLS Model Processor Worker

**Extension** enables the defined action lists in Model Processor Report Flex or Model Processor Rework Flex to be applied to Creo objects in the Windchill visualisation process.



# GENIUS TOOLS Model Processor – Product Matrix

## Product Versions Overview

### Use Cases



	GENIUS TOOLS Model Processor User	GENIUS TOOLS Model Processor Report	GENIUS TOOLS Model Processor Rework	GENIUS TOOLS Model Processor Worker Extension
User profile	<ul style="list-style-type: none"> <li>CAD users</li> </ul>	<ul style="list-style-type: none"> <li>CAD/PDM owner, administrators</li> </ul>	<ul style="list-style-type: none"> <li>CAD/PDM owner, administrators</li> </ul>	<ul style="list-style-type: none"> <li>CAD/PDM owner</li> </ul>
Use Cases	<ul style="list-style-type: none"> <li>working off PTC Creo data by the users interactively during the CAD session (e.g. adapting external data to company standards, rework data from a PDM system...)</li> <li>adapt catalogue parts* to company standards</li> <li>Trigger: automated processing of action lists when loading and saving creo models</li> </ul>	<ul style="list-style-type: none"> <li>generate reports of large amounts of data</li> <li>full data pool examination (regenerability, invocability...) when migrating or updating</li> </ul>	<ul style="list-style-type: none"> <li>batch processing</li> <li>examination, reworking and clearing-up the entire data pool when implementing data management at migration or in update projects</li> <li>consolidation of different Creo inventory data</li> <li>applying CAD standard changes to the entire data pool</li> <li>modification of parameter concept in the entire data pool</li> <li>modification of layer concept in the entire data pool</li> </ul>	<ul style="list-style-type: none"> <li>the defined action lists in the Model Processor Report or Model Processor Rework to be applied to Creo objects in the Windchill visualization process</li> </ul>
creation and modification of action lists	no	yes	yes	no
execution of pre-defined action lists	yes	yes	yes	yes

\* free catalogue parts in native PTC Creo and Pro/ENGINEER format available for download at [ptc.partcommunity.com](http://ptc.partcommunity.com)



# GENIUS TOOLS Model Processor – Product Matrix

## Product Versions Overview

### Functionality, prerequisites and licensing



	GENIUS TOOLS Model Processor User	GENIUS TOOLS Model Processor Report	GENIUS TOOLS Model Processor Rework	GENIUS TOOLS Model Processor Worker Extension
edit current Creo model	yes	yes	yes	yes
edit models in session/workspace	no <sup>1</sup>	no	yes <sup>2</sup>	yes
batch processing for creating reports	no	yes	yes	no
batch processing with editing Creo models	no	no	yes	no
Licensing	floating license, bound to Creo session	concurrent (floating)	concurrent (floating)	designated Computer
internet connection required	no	no	no	no
Registration Required	no	no	no	no
System Requirements				

*GENIUS TOOLS Model Processor products are only available as subscription license*

*“model” = part, assembly or drawing*

*<sup>1</sup> only models dependent of current model*

*<sup>2</sup> all in session /workspace*

