

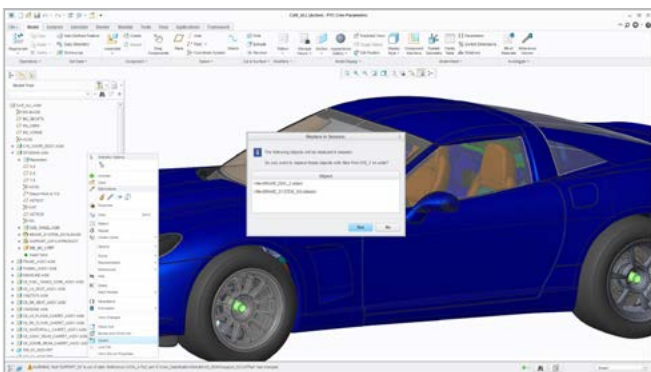
# PTC Creo® Collaboration Extensions

Collaborate Effectively Across CAD Platforms

The PTC Creo Collaboration Extensions provide organizations with the tools to collaborate more effectively when working with data from multiple CAD systems, enabling design teams to improve product quality, desirability, and on-time delivery.

Most organizations would prefer to collaborate with partners early and often. Unfortunately, when these partners work on different CAD systems, the manual effort required to incorporate multiple iterations of data, while preserving design intent built across the models, often prevents this from happening.

The PTC Creo Collaboration Extensions address this challenge. The software ensures that revisions to CATIA®, Siemens® NX™, and SolidWorks® data used in designs can be easily incorporated while preserving design intent that has been built across the models. This allows designers to quickly and easily integrate new revisions of non-PTC Creo data into designs. Additionally, PTC Creo data can be shared with partners in CATIA, Siemens NX, and SolidWorks formats.

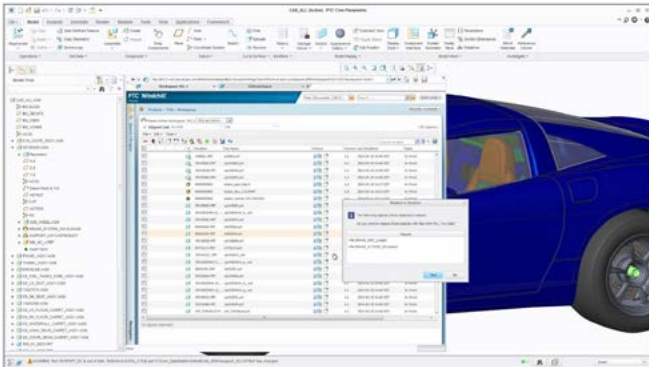


Create and maintain design intent with non-PTC Creo files

## Key benefits:

- Enable higher levels of concurrent engineering
  - Easily incorporate non-PTC Creo data throughout the design process
  - Effortlessly manage changes to non-PTC Creo data
  - Protect design intent established between PTC Creo and non-PTC Creo data
  - Reduce the number and impact of late stage design changes
- Promote data re-use and sharing
- Support on-time product delivery
  - Ensure consistency and integrity is maintained through the design process
- Reduce the need to create and manage neutral formats
  - Exchange information in the most common 3D CAD formats
  - Quickly and easily exchange PTC Creo models with partners using CATIA V4/V5, Siemens NX, or SolidWorks
  - No requirement for extra CAD software or customized integrations

- Enable seamless updates
  - Quickly and easily incorporate new revisions of non-PTC Creo parts and assemblies into your designs
  - Maintain design intent across models regardless of where they come from



Maintain design intent with non-PTC Creo data with integrated updates

### Capabilities and specifications:

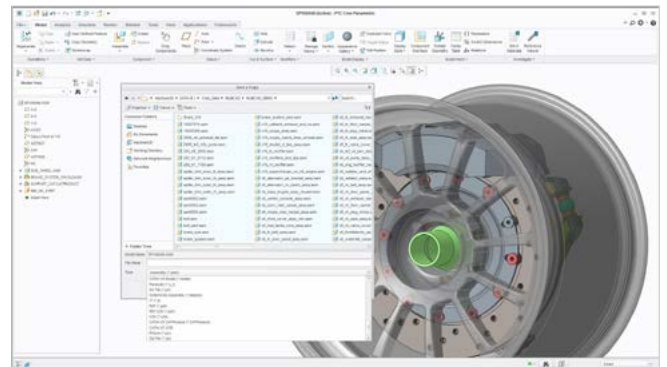
The PTC Creo Collaboration Extensions make working in a multi-CAD environment easier. These modules enable you to create and maintain seamless relationships between models from different CAD platforms. Changes to non-PTC Creo data can be understood and handled as easily as updates to PTC Creo data:

- Supports bidirectional exchange of both parts and assemblies
- Associative updates allow concurrent design and production work to proceed with confidence
- Native data import and export without requiring a CATIA V4/V5, Siemens NX, or SolidWorks license

PTC Creo offers four extensions that each enables collaboration for the specific CAD platform:

- **PTC Creo Collaboration Extension for CATIA V4**
- **PTC Creo Collaboration Extension for CATIA V5**
- **PTC Creo Collaboration Extension for Siemens NX**
- **PTC Creo Collaboration Extension for SolidWorks**

File Format	Import/Open	Update/Save As
CATIA V4	Up to 4.2.5	4.1.9
CATIA V5	R10 – R21 V5 6R2012 – 2013	R16 – R21 V5 6R2012 – 2013
Siemens NX	UG 13 to NX 8.5	NX 8.5 (Update) NX 3.0 (Export)
SolidWorks	2004 to 2013	2004 to 2013 (Update) 2005 (Export)



Save designs in CATIA, NX, or SolidWorks formats for easier exchange with partners

### Language Support

English, German, French, Italian, Spanish, Chinese (Simplified and Traditional), Japanese, Korean, and Russian

### Platform support and system requirements

Please visit the [PTC support page](#) for the most up-to-date platform support and system requirements.

© 2014, PTC Inc. All rights reserved. Information described herein is furnished for informational use only, is subject to change without notice, and should not be taken as a guarantee, commitment, condition or offer by PTC. PTC, the PTC logo, Product & Service Advantage, Creo, Elements/Direct, Windchill, Mathcad, Arbortext, PTC Integrity, Servigistics, ThingWorx, ProductCloud and all other PTC product names and logos are trademarks or registered trademarks of PTC and/or its subsidiaries in the United States and other countries. All other product or company names are property of their respective owners.

J3816 – Creo Collaboration Ext -DS – EN – 0514



**INNEO**®  
That's IT. Authorized Dealer

INNEO Solutions Ltd.  
60 Cygnet Court  
Timothy's Bridge Road  
Stratford upon Avon  
Warwickshire · CV37 9NW · UK

Phone: +44 (0) 1789 337920  
Fax: +44 (0) 1789 337921  
E-Mail: [inneo-uk@inneo.com](mailto:inneo-uk@inneo.com)  
Web: [www.inneo.com](http://www.inneo.com)