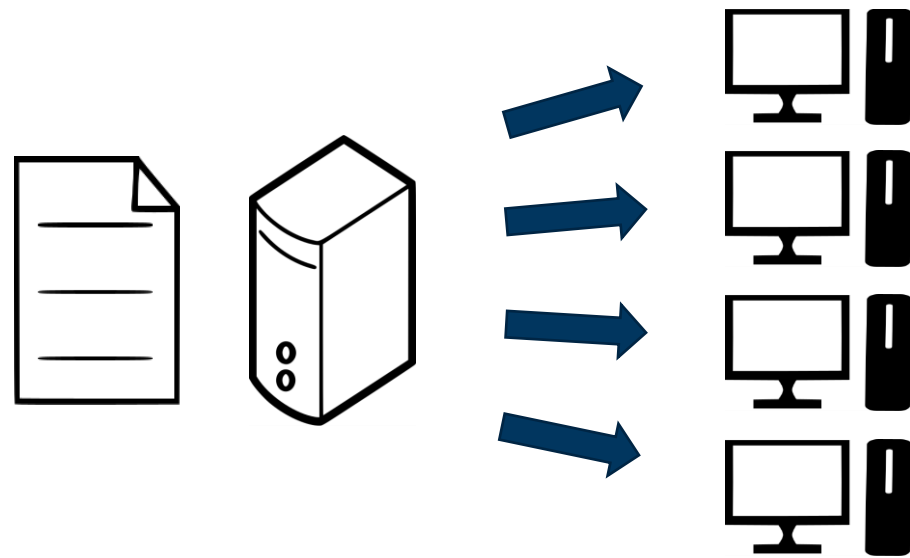


# Installing Creo Parametric with a floating license



## What is a Floating license:

- License server software with license file installed on server machine
- Client software can be installed on any number of machines
- Only number of licenses in the license file can run at the same time on client machines



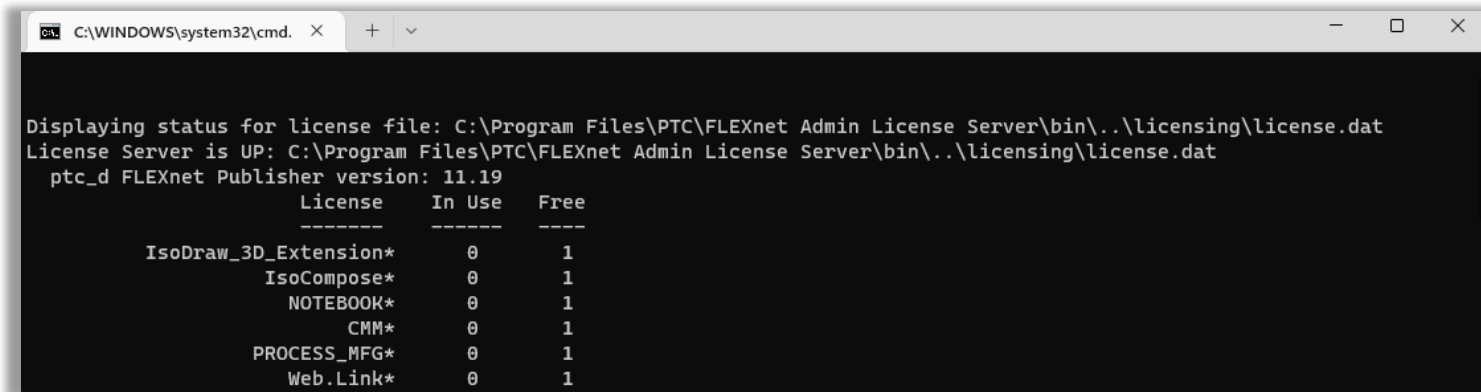
## **Information on how to get the latest license file can be found on the INNEO support page:**

- See the document on how to set up a PTC account if you do not have one
- See the document on how to request the latest license file
- The images will be different for older versions of Creo, but the steps to install will be similar

**Before installing Creo on a workstation, make sure the license server is running and that it can be accessed from the workstations over the network**

**This can be done by:**

- Running the `ptcstatus.bat` **on the license server** from the `C:\Program Files\PTC\FLEXnet Admin License Server\bin` folder. If the licenses are available you will get a window that looks like this.



```
C:\WINDOWS\system32\cmd. x + v

Displaying status for license file: C:\Program Files\PTC\FLEXnet Admin License Server\bin\..\licensing\license.dat
License Server is UP: C:\Program Files\PTC\FLEXnet Admin License Server\bin\..\licensing\license.dat
ptc_d FLEXnet Publisher version: 11.19
  License      In Use  Free
  -----
IsoDraw_3D_Extension*    0      1
IsoCompose*              0      1
NOTEBOOK*               0      1
  CMM*                   0      1
PROCESS_MFG*             0      1
Web.Link*                0      1
```

- Or , check that the `Imadmin_ptc` service is running on the server machine
- Ping the license server from the client workstation
  - Open a command prompt window. Type **ping**, add a space and type the license server name, and press enter.
    - Example: `Ping license-server-1`

## Download the required version of Creo Parametric from the PTC website from the link below

- [Download Creo](#)
- Select the version
- Select Creo <x.x> for Windows
- Select most recent Datecode
- Click on download now HTTPS
  - for Win64
- Download and unzip

Release Creo 9.0

- PTC Creo Human Factors
- Creo Progressive Die Extension 15.0
- Creo Product Insight ThingWorx Extension
- Creo Expert Moldbase Extension 15.0
- Creo 9.0 for Windows

Most Recent Datecode

Datecode: 9-0-3-0

Prior to downloading Creo 9.0, be sure to update your license file to Creo 9.0, refer to [CS28006](#).

Creo 9.0.3.0 is packaged with the PTC License Server powered by FlexNet Publisher 11.17.1.0. PTC recommends that you upgrade your PTC License Server to 11.17.1.0.

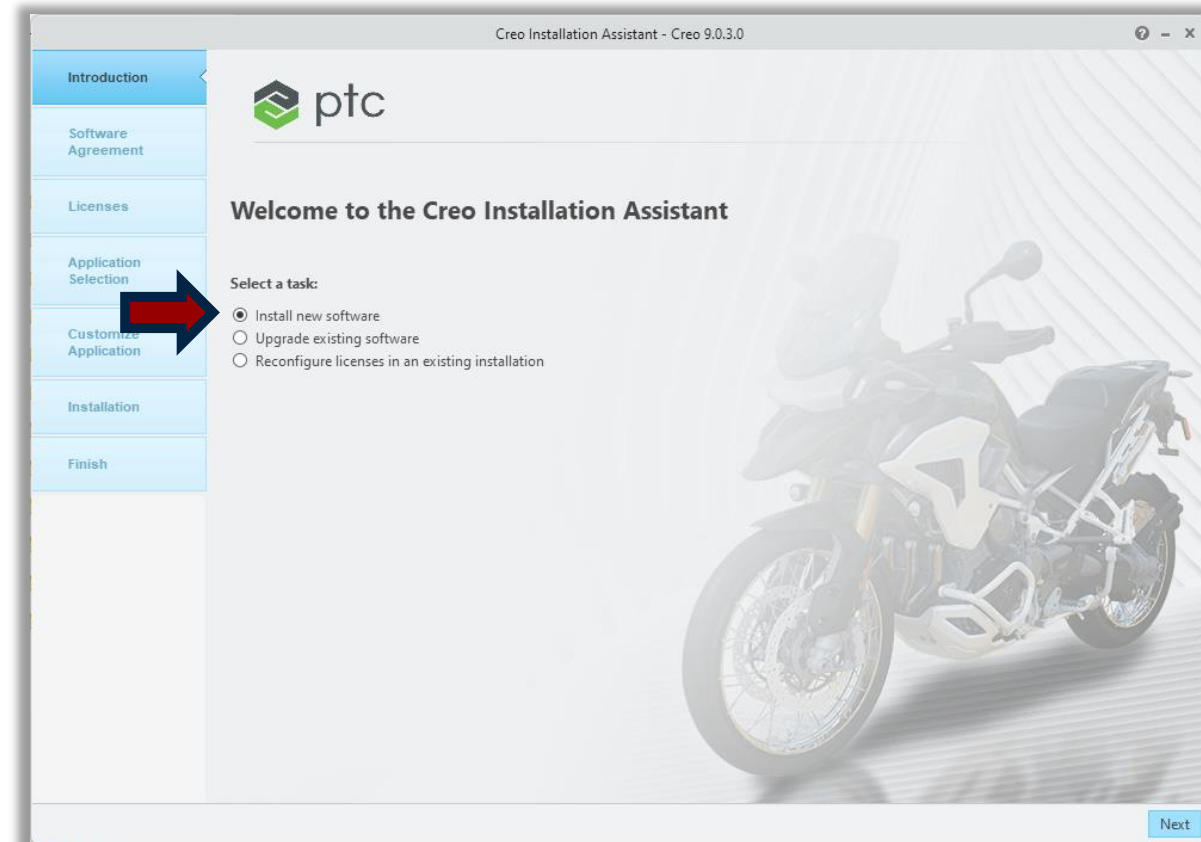
Refer to the [Read this first](#) for additional information & requirements.

9.0 is download-only, and no physical media to be shipped.

HelpCenter (2081 MB)	Download now: <a href="#">HTTPS</a>	<a href="#">View SHA-256 checksum</a>
Install-from-web (74 MB)	Download now: <a href="#">HTTPS</a>	<a href="#">View SHA-256 checksum</a>
Win64 (5674 MB)	Download now: <a href="#">HTTPS</a>	<a href="#">View SHA-256 checksum</a>

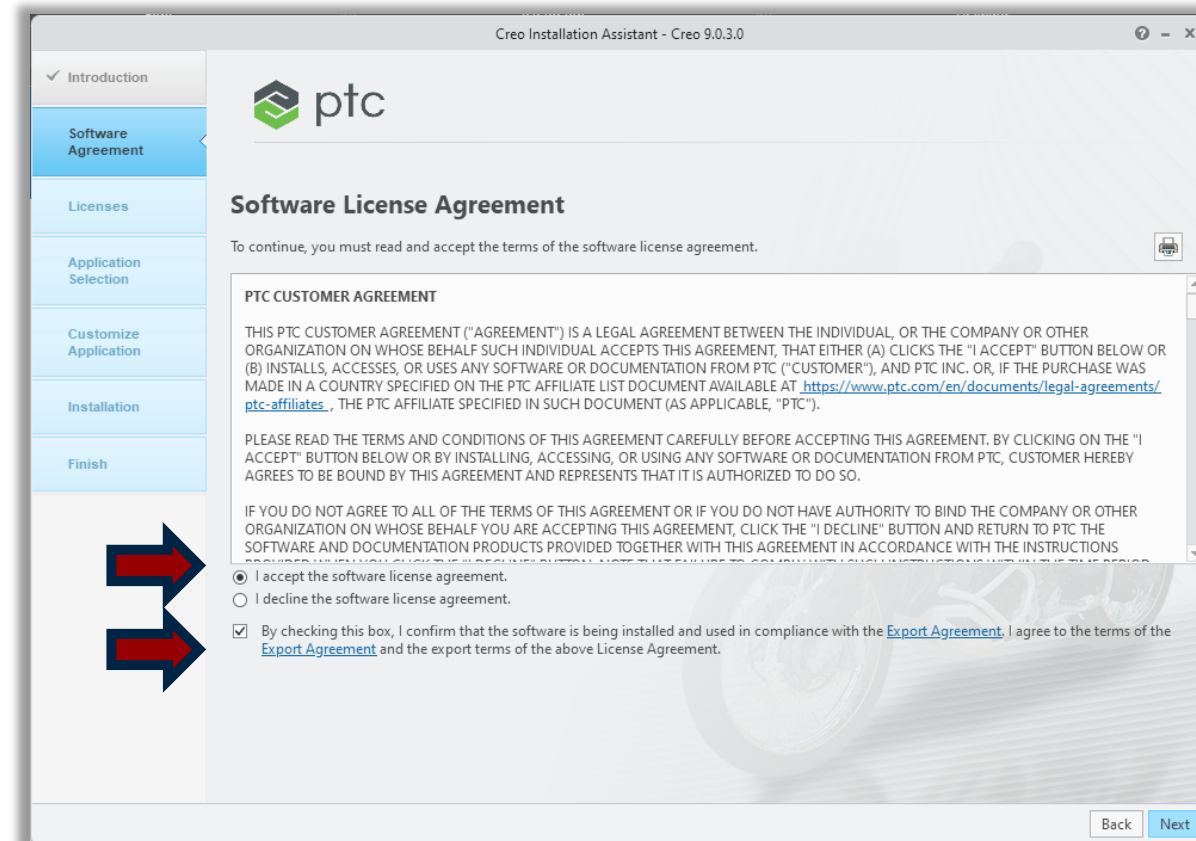
# Installing Creo Parametric with a floating license

- Double click on the setup.exe from the installation files
- Select **Install new software** if needed
- Click on Next



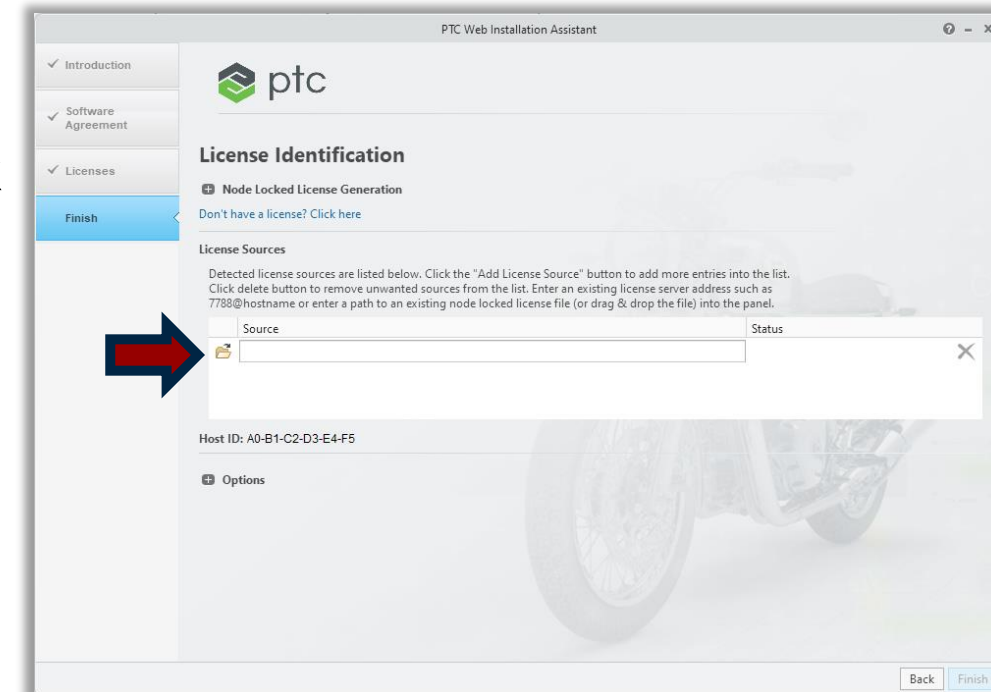
# Installing Creo Parametric with a floating license

- Review the Software license agreement
- Accept the license and export agreement
- Click on next.



# Installing Creo Parametric with a floating license

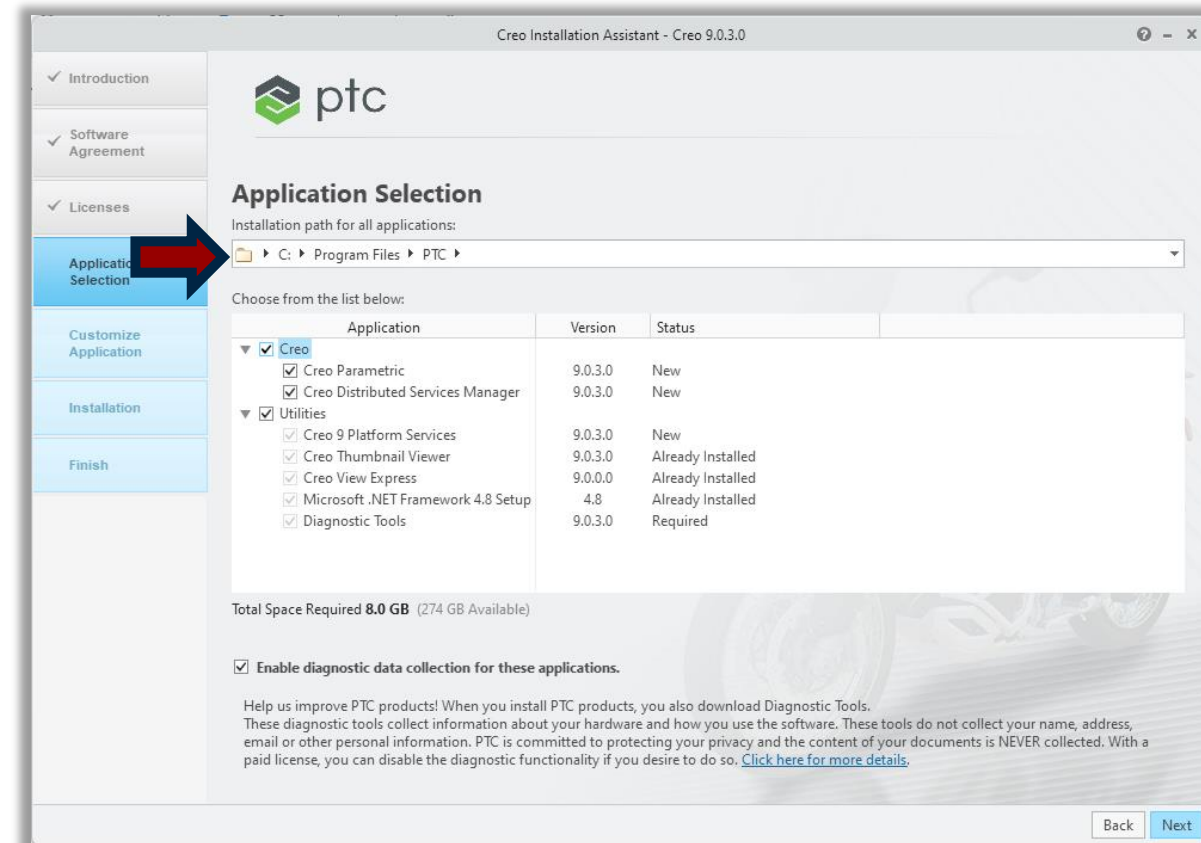
- Next to the open icon, type 7788@<servername>,
  - (where servername is the windows machine name for the server where the license server software was installed on.)
- The status box next to it should show as available
- **If the status is not shown as available:**
  - Check the spelling of the servername
  - Check that the license server service is running
  - Check that the server can be accessed over the network
  - Check that the firewall settings were set on the server
    - See the license server installation document.
- Click on Next





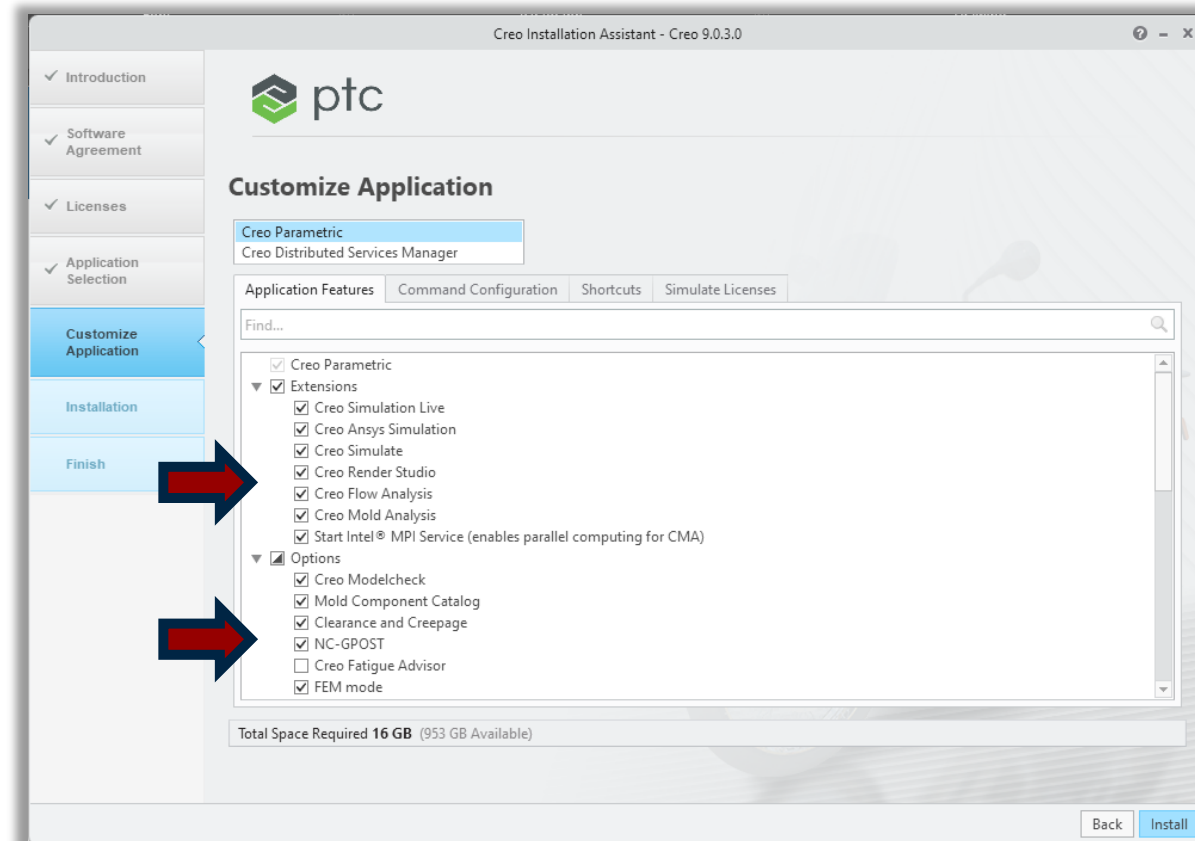
# Installing Creo Parametric with a floating license

- The installation path can be changed to a different location
  - (not required to change by default)
- Click on next



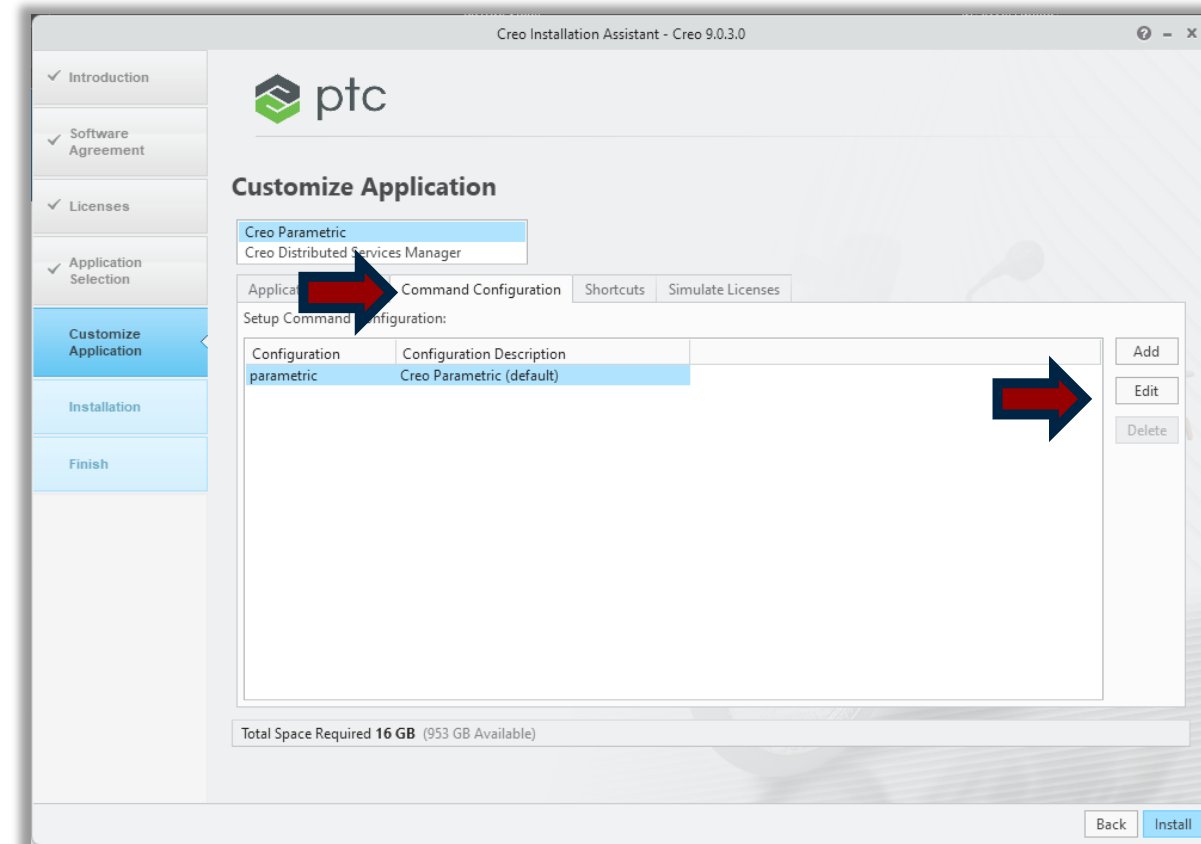
# Installing Creo Parametric with a floating license

- Select any additional required options that needs to be installed.



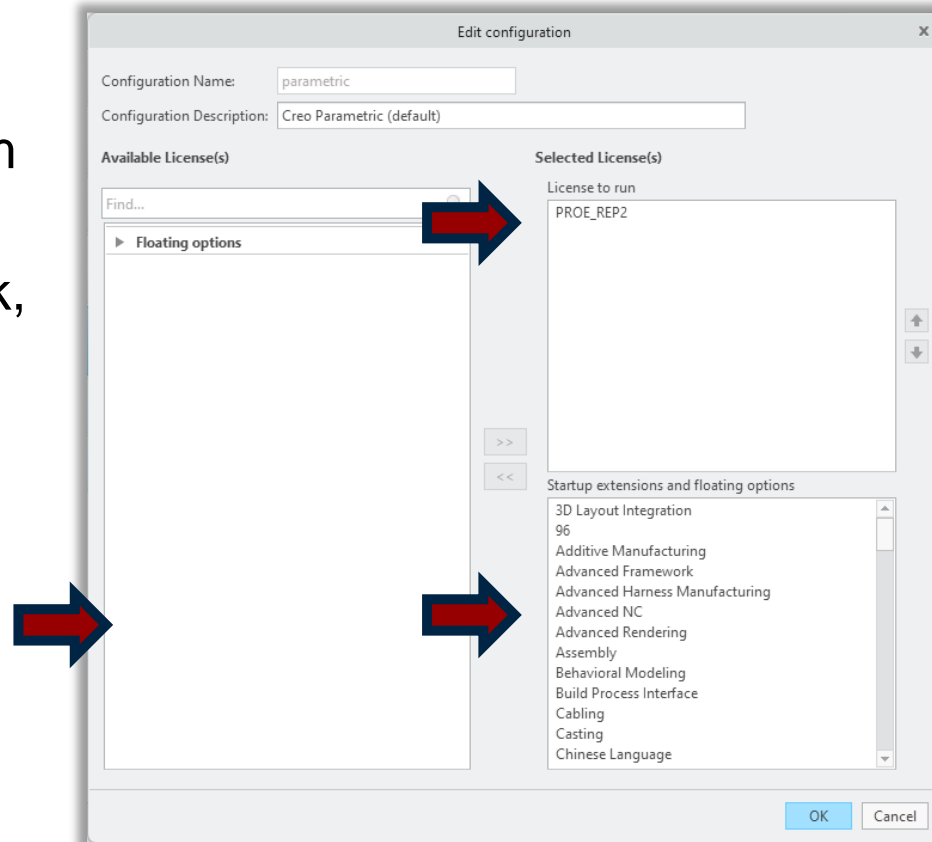
# Installing Creo Parametric with a floating license

- Click on the second tab (Command configuration)
- Click on edit to check that all license options are selected



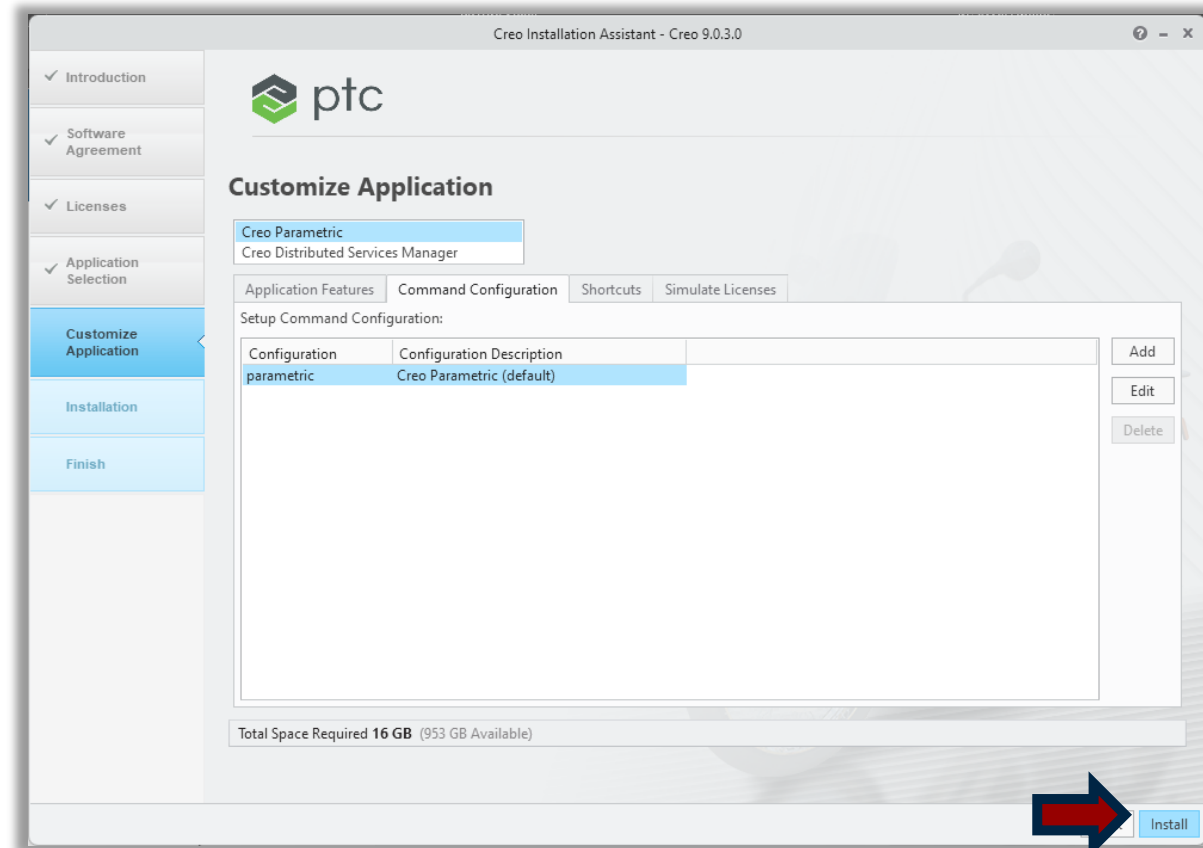
# Installing Creo Parametric with a floating license

- Verify that there are at least one option in the top right hand block. (license to run) If not move option from left box to the right
- If additional modules have been purchased, move them to the right as well.
  - Additionally purchased modules will be shown in the bottom left hand corner by default.
  - Moving items to the right will force the license server to lock, and Creo to activate that item when Creo starts
- Click on OK to close the window



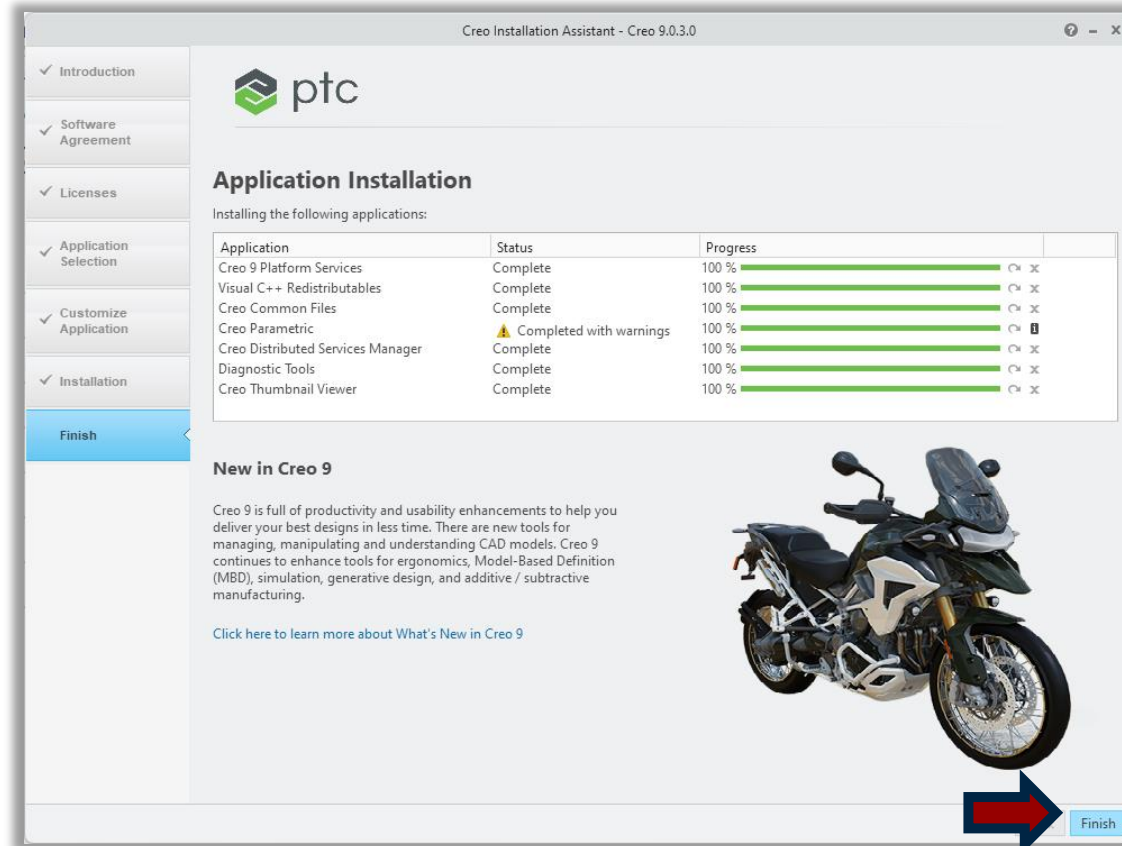
# Installing Creo Parametric with a floating license

- Click on add if you want to create extra startup commands.
- Click on install to start the installation



# Installing Creo Parametric with a floating license

- Click on Finish to close the installation window when the installation is complete.
- You might get an option (completed with warnings)
  - This is just a warning that to say that you might have selected an option to install that needs a java license





# Thank you!