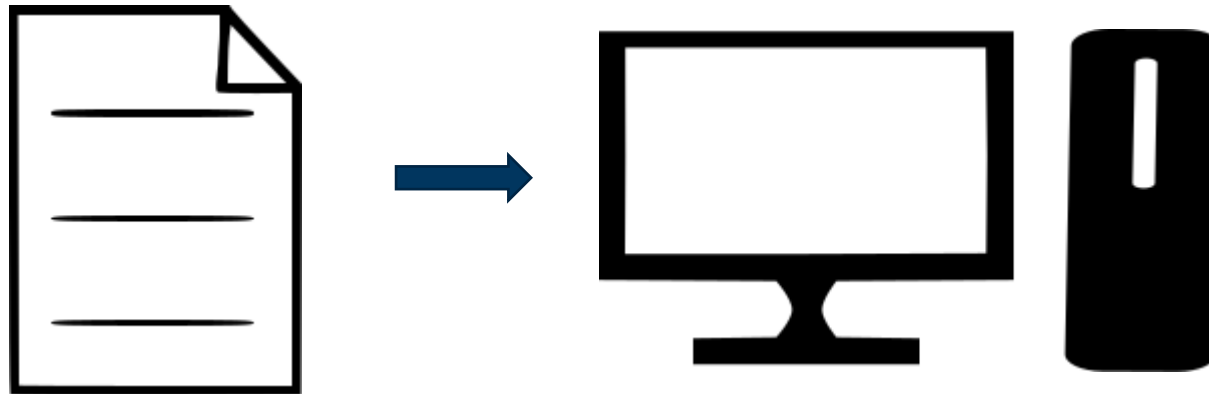


Installing Creo Parametric with a locked license



What is a Locked license:

- License can be used on one workstation only
- Host ID (mac address) for the workstation and the license file must be the same

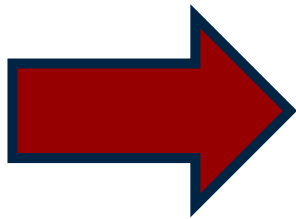


Information on how to get the latest license file can be found on the INNEO support page:

- See the document on how to set up a PTC account if you do not have one
- See the document on how to request the latest license file
- The images will be different for older versions of Creo, but the steps to install will be similar

Open the license pack email and save the license.zip file to the license server machine

- Unzip the file to extract the two license files



[RMX:AL] License Pack for A0-B1-C2-D3-E4-F5 , PTC Support Case Number - 123456

do_not_reply@ptc.com
To : CUSTOMER

License.zip
47 KB

Dear PTC Customer,

Attached you will find the requested license file for the PTC HOSTID A0-B1-C2-D3-E4-F5

Please read the instructions carefully before attempting to use the license files as this email contains information and links to instructions for multiple PTC products.

New PTC customers are encouraged to consult the PTC FlexNet Licensing and Installation FAQ page https://support.ptc.com/appserver/wcms/standards/freefull_cs.jsp?&im_dbkey=116182&im_language=en.

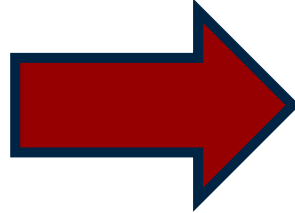
TECHNICAL SUPPORT



For assistance installing these licenses, please contact PTC Technical Support via the Web or Phone at <https://support.ptc.com/appserver/support/csguide/csguide.jsp>

Two files from the zip file

- Use license file:
 - Im_<number>.txt to allow license borrowing (only for floating licenses)
 - Im_<number>_standard.txt to not allow license borrowing

Example:

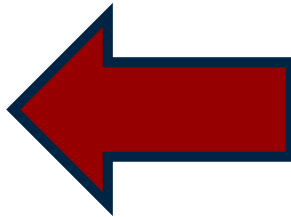


Name
 Im_16726193_3937799.txt
 Im_16726193_3937799_standard.txt

Verify that the host ID (mac address) in the license file and Creo workstation is the same.

- Open the license file and find the host ID (mac address)

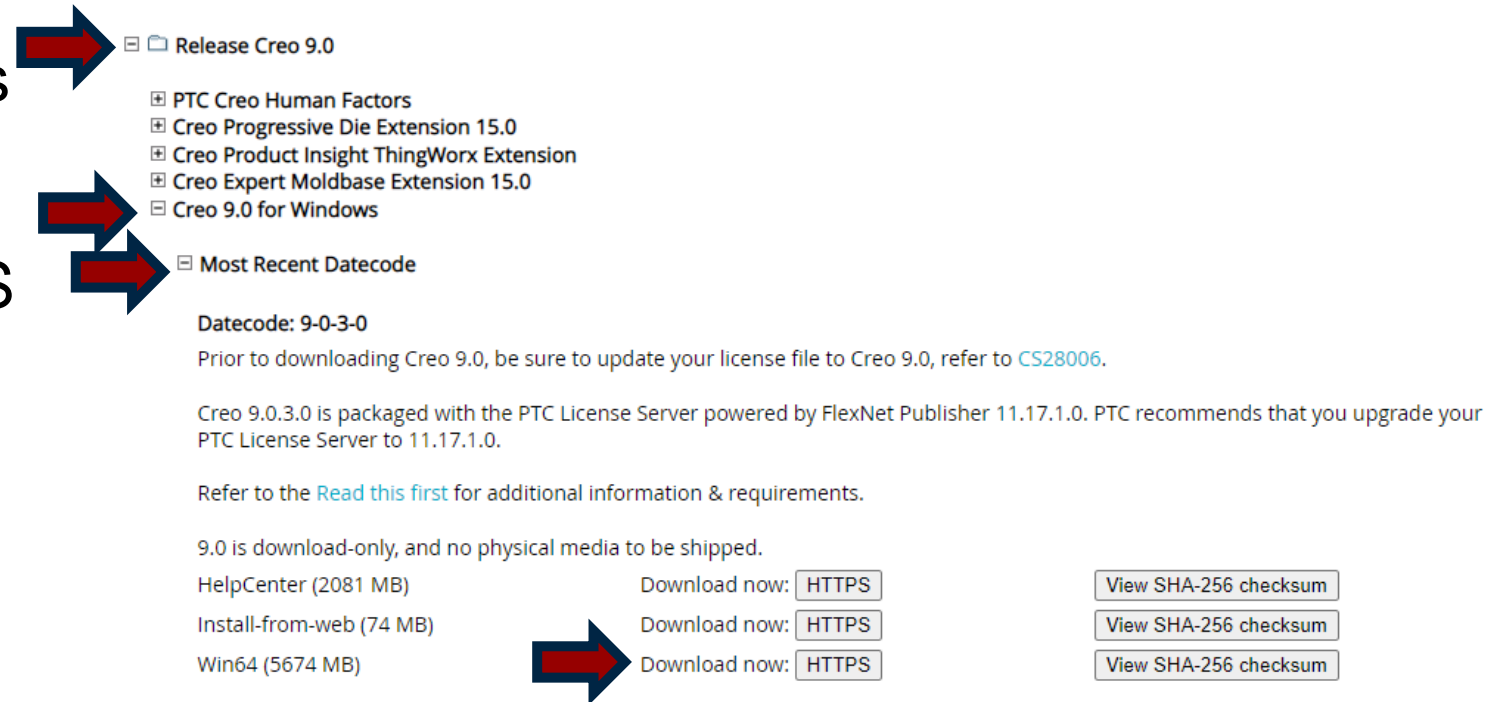
```
#-----  
#Your call number is 000000000  
#-----  
#-----  
#License Pack for Request ID 0000000  
#This License pack was requested by: PTC Host ID A0-B1-C2-D3-E4-F5  
#-----
```



- Compare the host ID in the license file to the workstation host ID by following the steps below:
 - Run command prompt and type **ipconfig /all** and compare

Download the required version of Creo Parametric from the PTC website from the link below

- [Download Creo](#)
- Select the version
- Select Creo <x.x> for Windows
- Select most recent Datecode
- Click on download now HTTPS
 - for Win64
- Download and unzip



Release Creo 9.0

- PTC Creo Human Factors
- Creo Progressive Die Extension 15.0
- Creo Product Insight ThingWorx Extension
- Creo Expert Moldbase Extension 15.0
- Creo 9.0 for Windows

Most Recent Datecode

Datecode: 9-0-3-0

Prior to downloading Creo 9.0, be sure to update your license file to Creo 9.0, refer to [CS28006](#).

Creo 9.0.3.0 is packaged with the PTC License Server powered by FlexNet Publisher 11.17.1.0. PTC recommends that you upgrade your PTC License Server to 11.17.1.0.

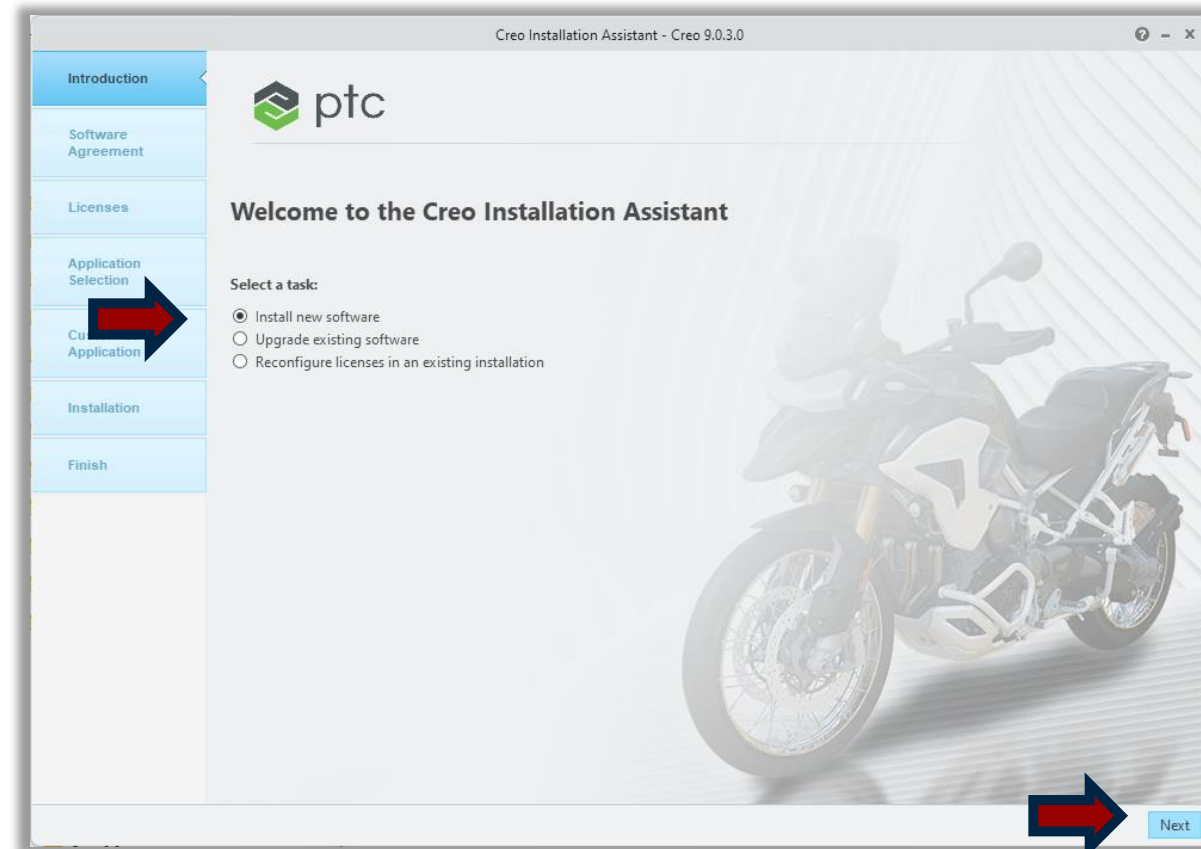
Refer to the [Read this first](#) for additional information & requirements.

9.0 is download-only, and no physical media to be shipped.

HelpCenter (2081 MB)	Download now: HTTPS	View SHA-256 checksum
Install-from-web (74 MB)	Download now: HTTPS	View SHA-256 checksum
Win64 (5674 MB)	Download now: HTTPS	View SHA-256 checksum

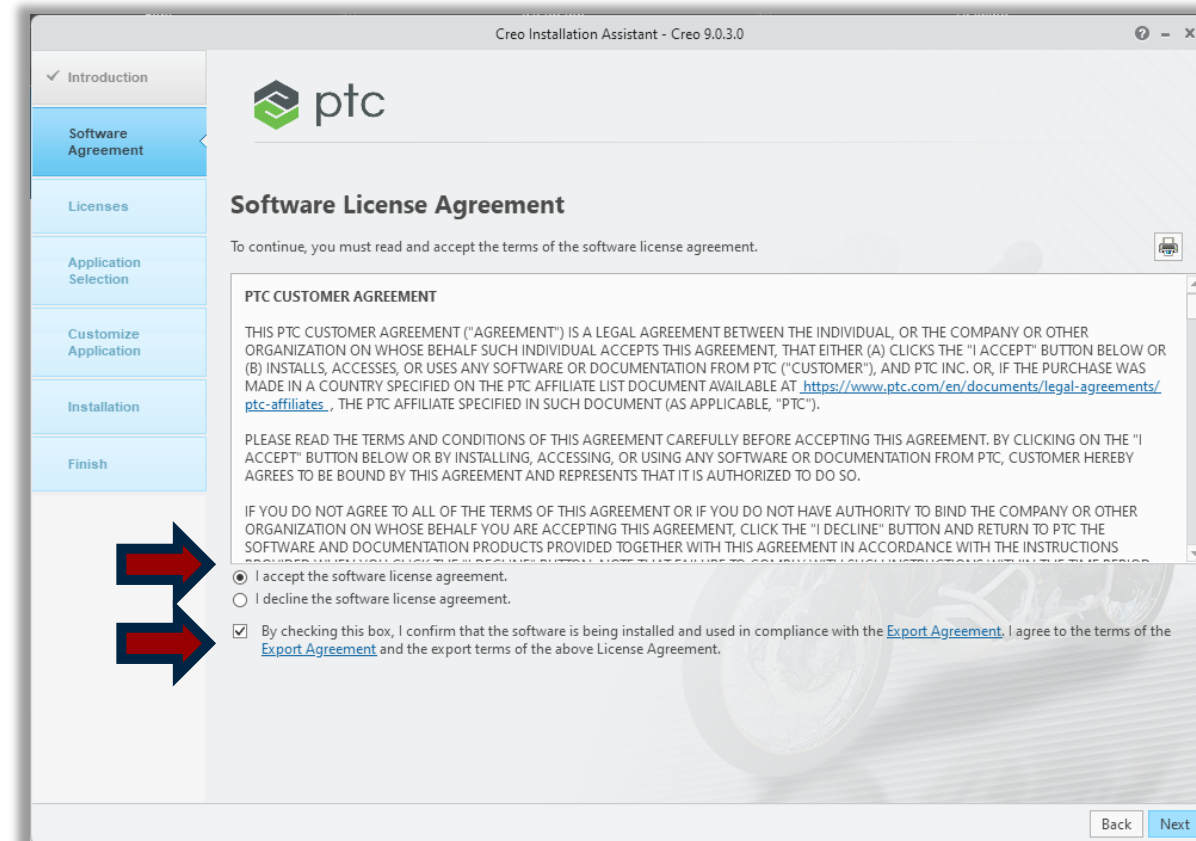
Installing Creo Parametric with a locked license

- Double click on the setup.exe from the installation files
- Select **Install new software** if needed
- Click on Next



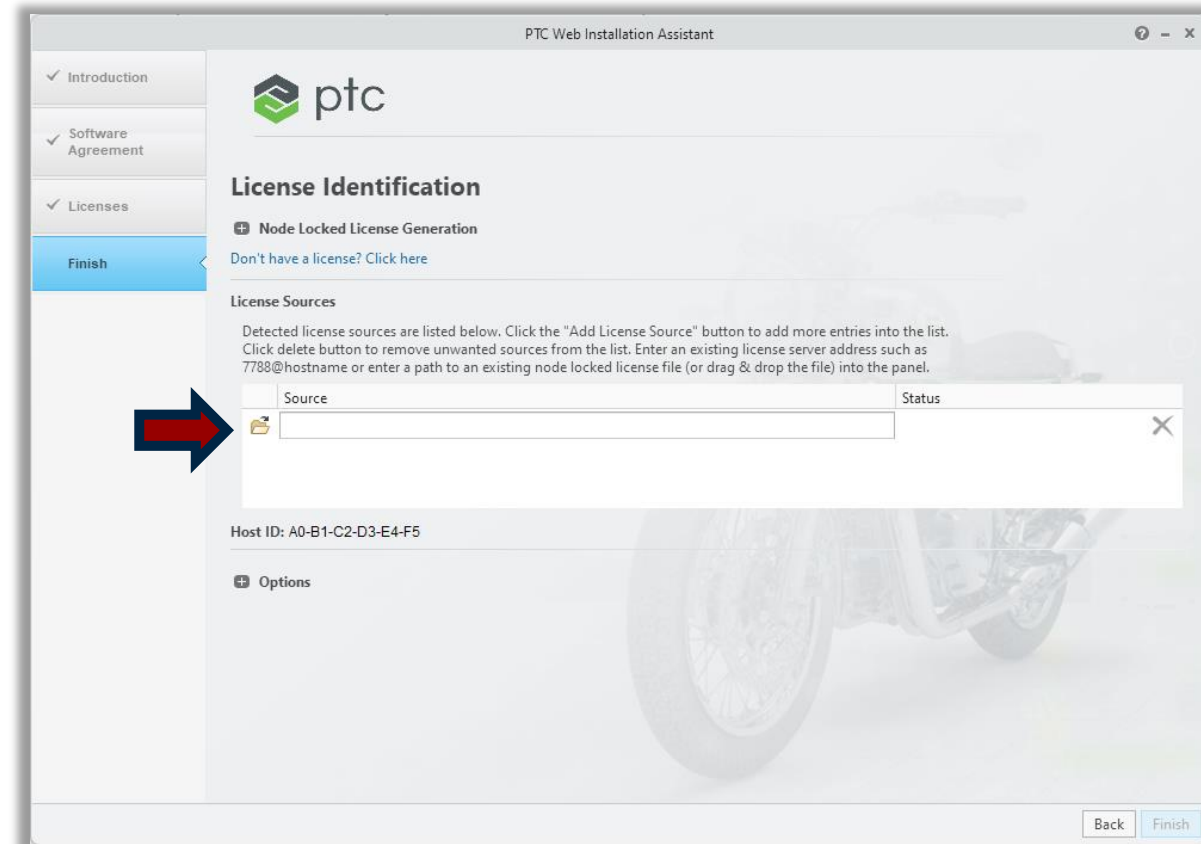
Installing Creo Parametric with a locked license

- Review the Software license agreement
- Accept the license and export agreement
- Click on next.



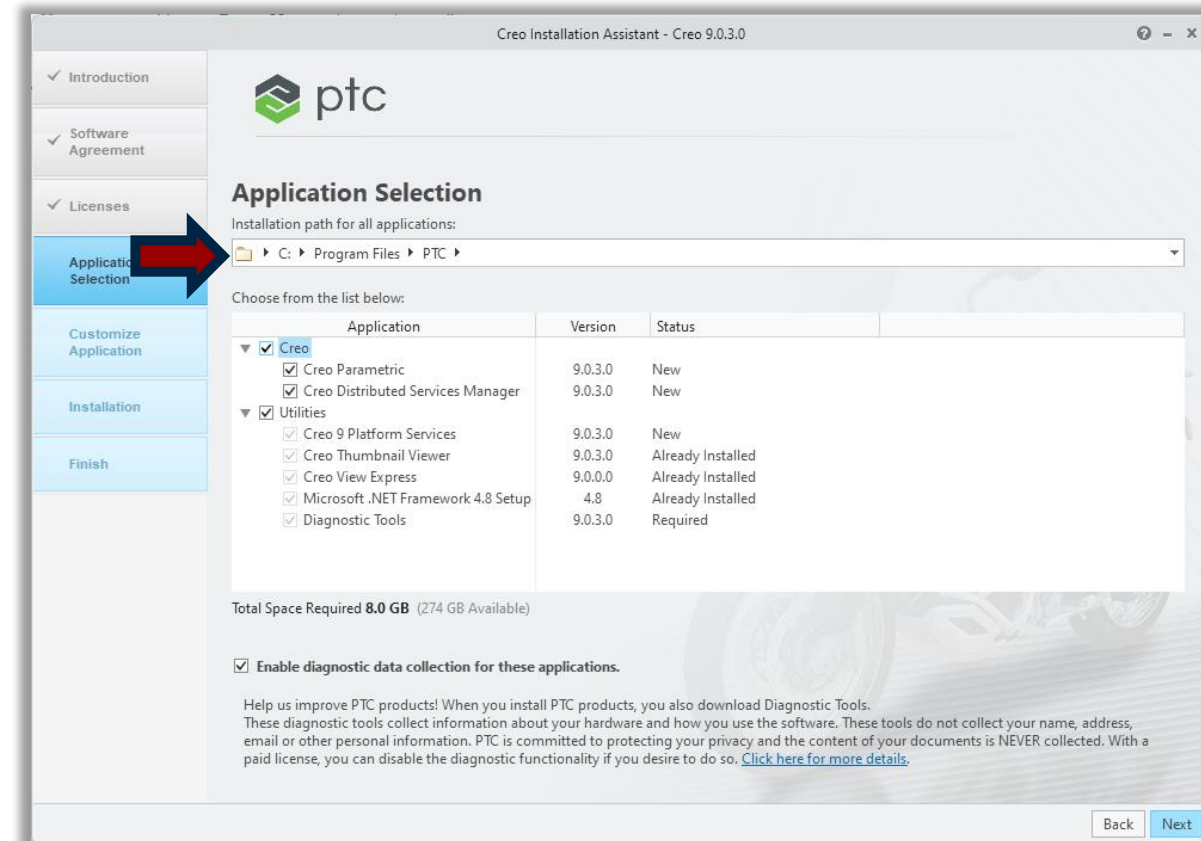
Installing Creo Parametric with a locked license

- Click on the open icon and browse to the lm_XXXX.txt license file.
- Click on next



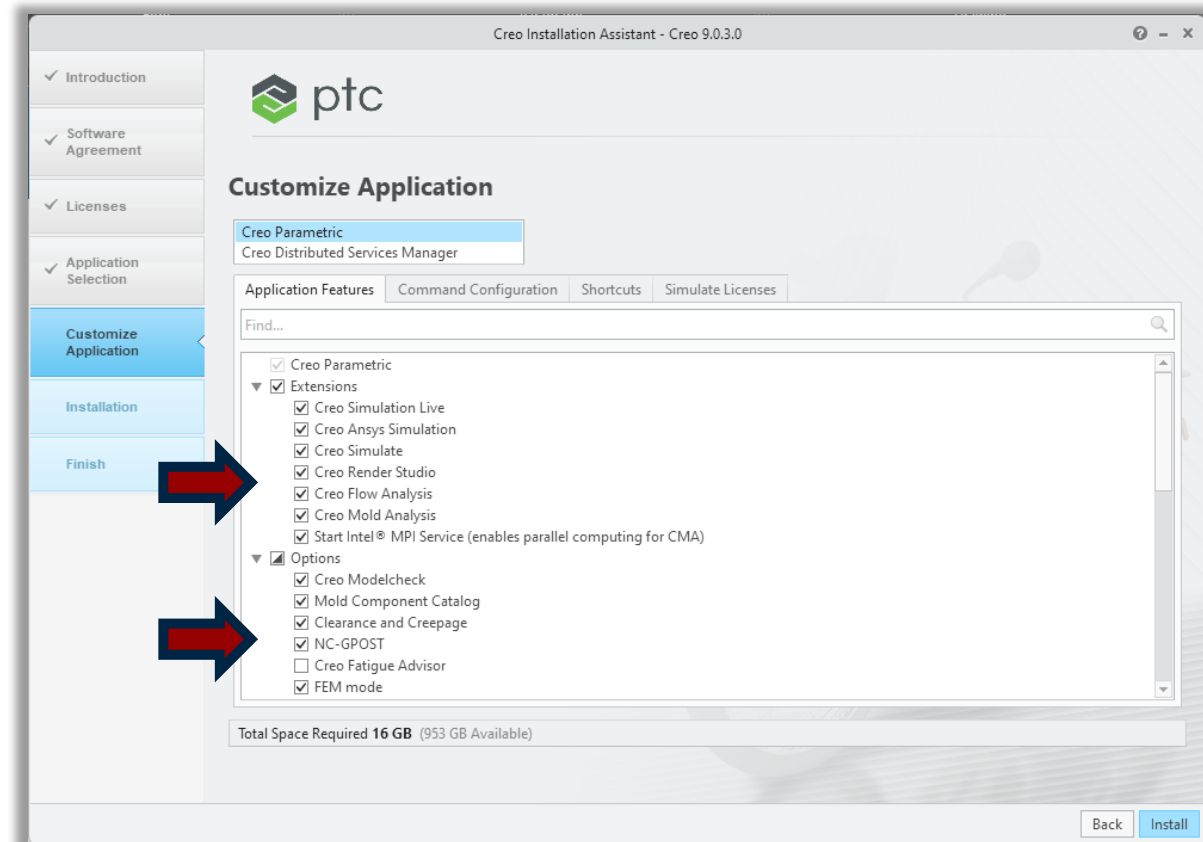
Installing Creo Parametric with a floating license

- The installation path can be changed to a different location
 - (not required to change by default)
- Click on next



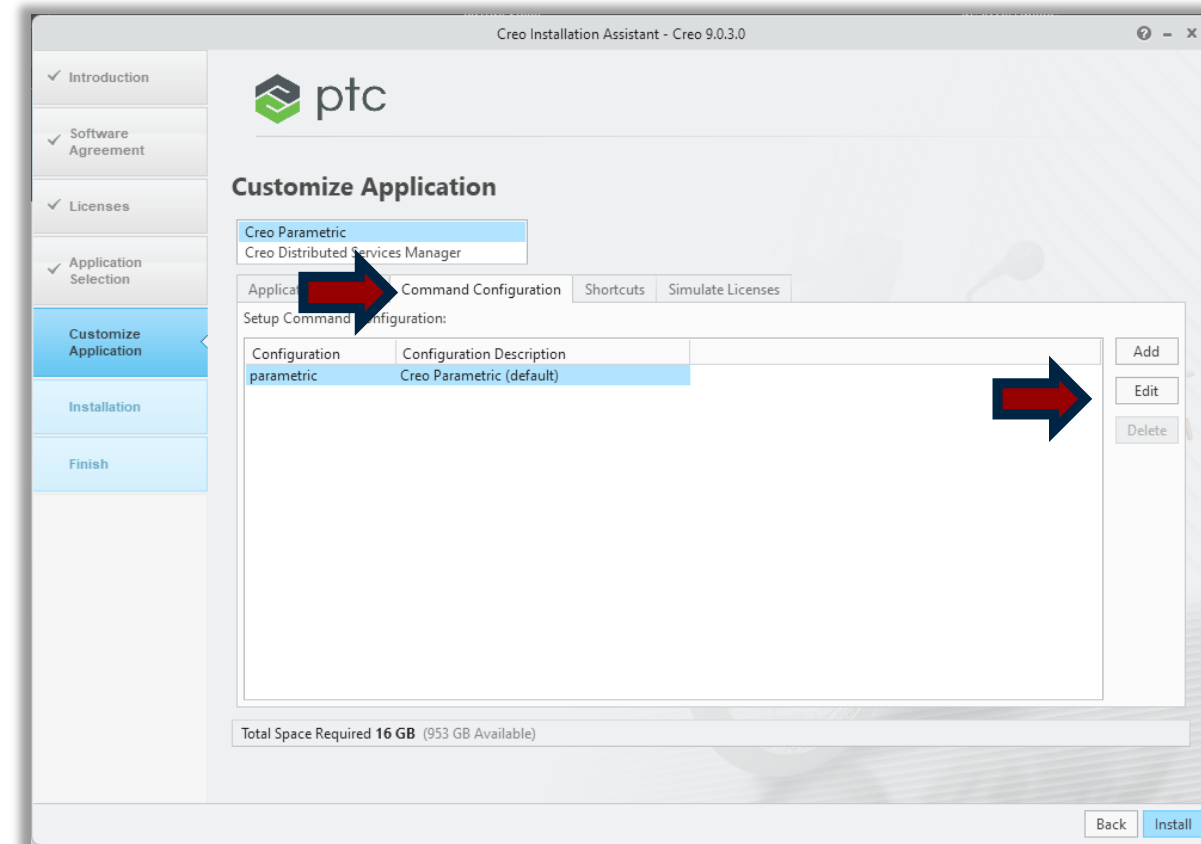
Installing Creo Parametric with a floating license

- Select any additional required options that needs to be installed.



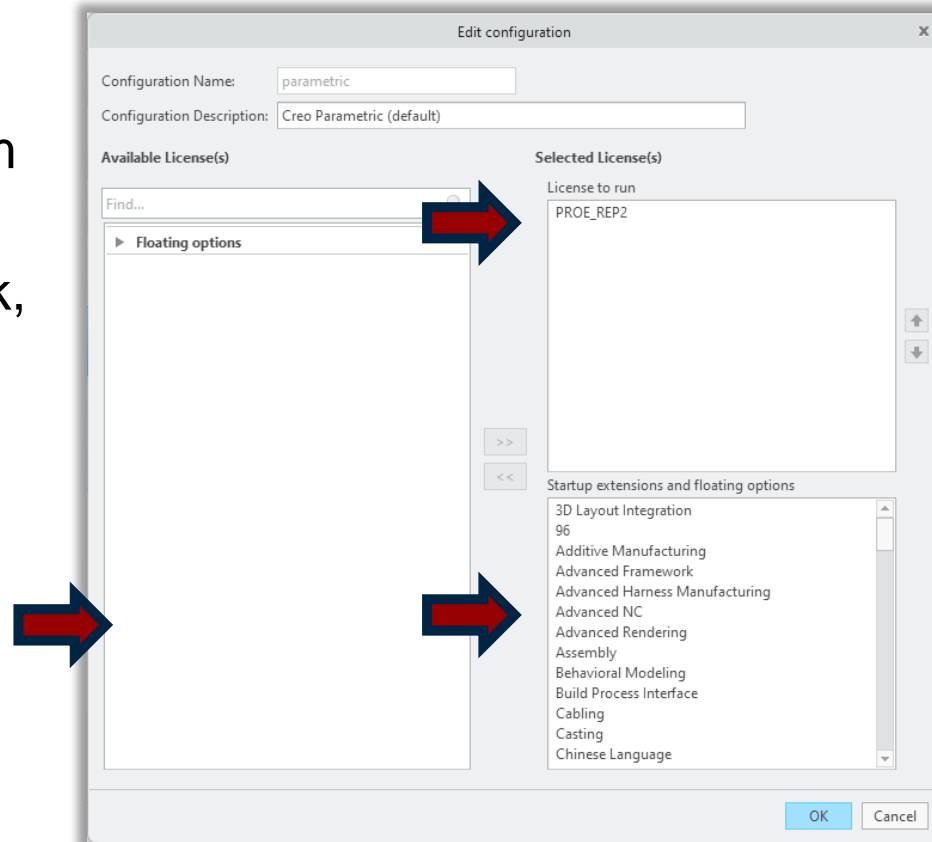
Installing Creo Parametric with a floating license

- Click on the second tab (Command configuration)
- Click on edit to check that all license options are selected



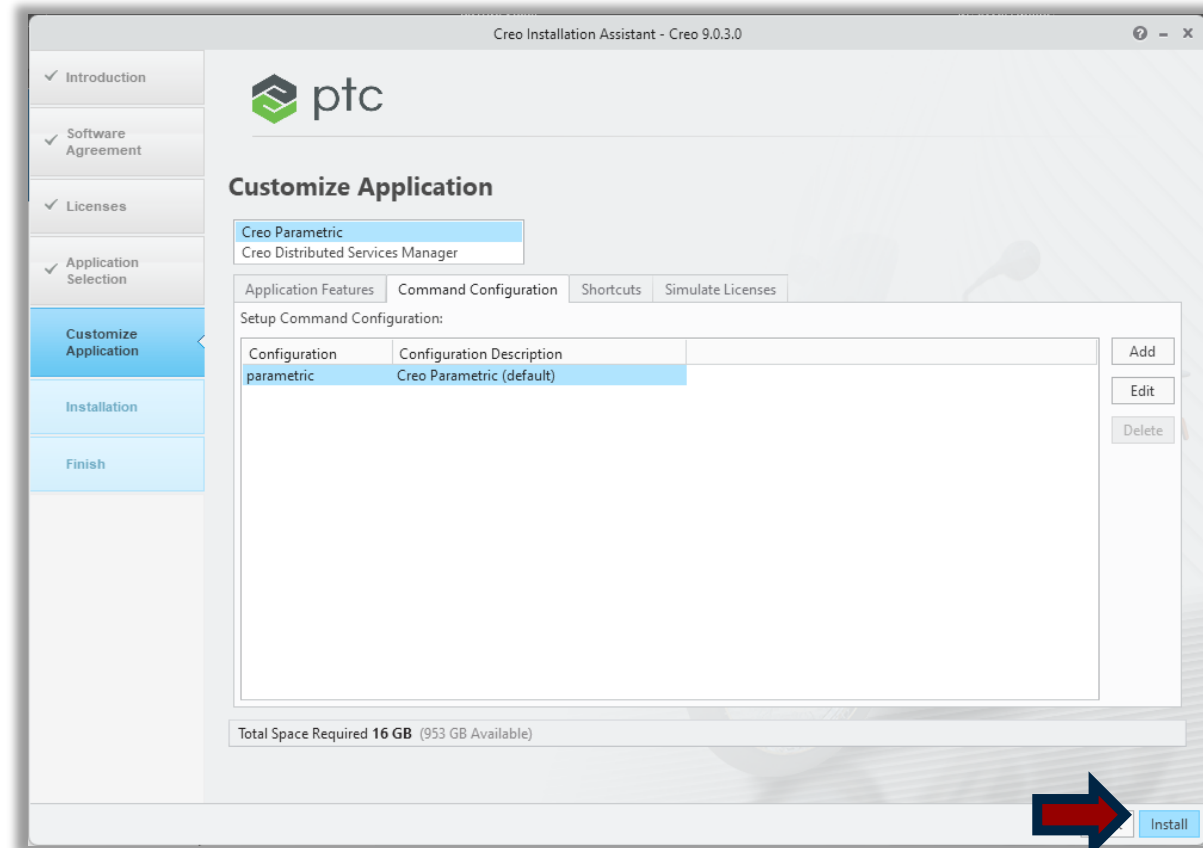
Installing Creo Parametric with a floating license

- Verify that there are at least one option in the top right hand block. (license to run) If not move option from left box to the right
- If additional modules have been purchased, move them to the right as well.
 - Additionally purchased modules will be shown in the bottom left hand corner by default.
 - Moving items to the right will force the license server to lock, and Creo to activate that item when Creo starts
- Click on OK to close the window



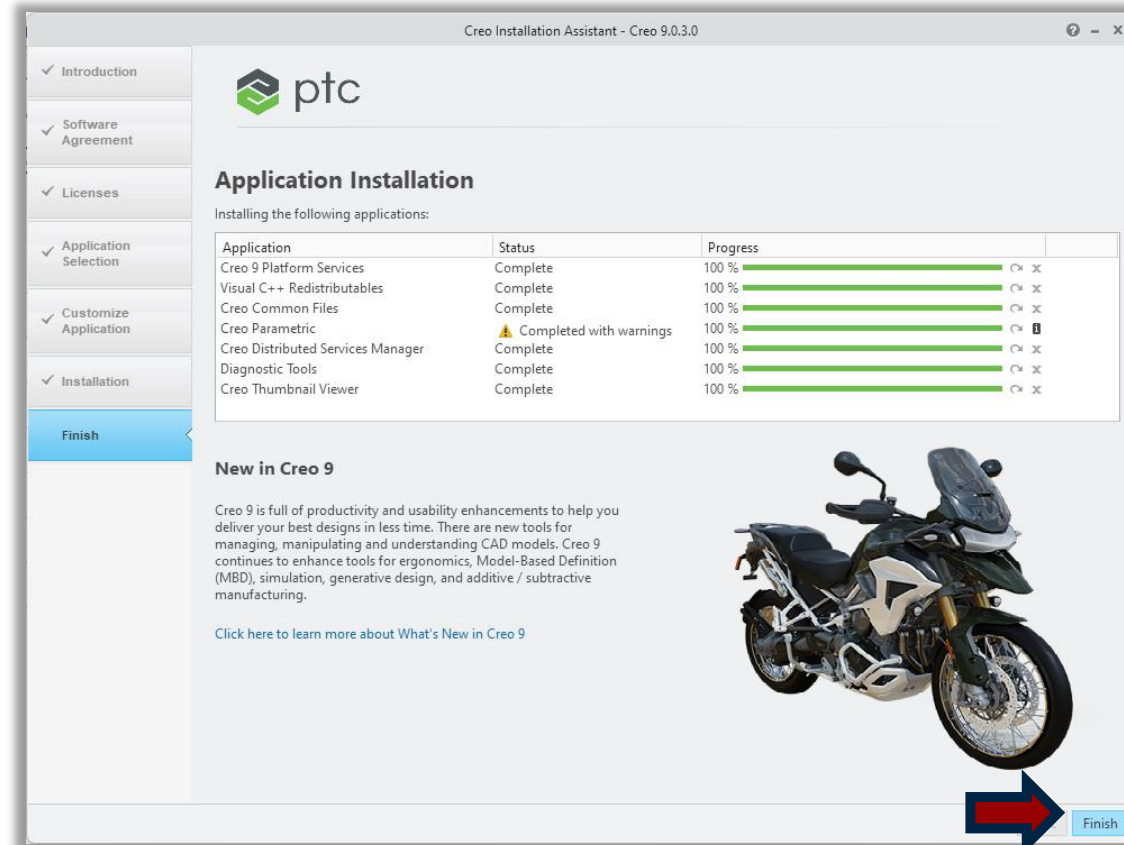
Installing Creo Parametric with a floating license

- Click on add if you want to create extra startup commands.
- Click on install to start the installation



Installing Creo Parametric with a floating license

- Click on Finish to close the installation window when the installation is complete.
- You might get an option (completed with warnings)
 - This is just a warning that to say that you might have selected an option to install that needs a java license





Thank you!