

# TOP 10 REASONS

## To Buy Pro/ENGINEER® Wildfire® 5.0

### DESIGN WITHOUT BARRIERS

Pro/ENGINEER Wildfire 5.0—the latest release of PTC’s award-winning, integrated 3D CAD/CAM/CAE solution—offers the broadest range of exciting new capabilities to help you overcome the barriers to design productivity. From the hundreds of new capabilities, here are the top 10 reasons to upgrade today:

#### Raises the Bar on User Experience

##### 1. Faster, More Intuitive 3D CAD Design

The latest enhancements to overall user experience will help you overcome the barriers to design modification. Create and edit designs faster, with intuitive user interface (UI) commands and simplified workflows. See your design modifications instantly with real-time, dynamic feature editing. Disruption-free design also enables you to make design changes more quickly and easily. And with faster assembly, sheet metal and other design tasks, you’ll decrease your time-to-productivity.

#### Drives Dramatic Efficiency Gains

##### 2. Detailing Workflow and Efficiency

The streamlined, context-sensitive UI helps you focus on simple, sequential tasks, and improves navigation through the model tree and new sheet tabs. Accurate previews will save printing time and cost, and the new TrueType fonts will improve quality and reduce file size.

##### 3. Molded Part Design Efficiency

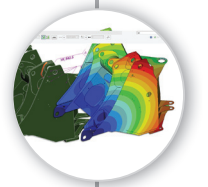
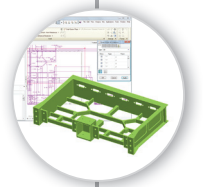
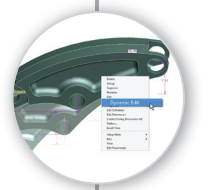
Increase your plastic part design efficiency by up to 80% with the innovative new rib tool. Generate curvature continuous rounds, use sketch points for patterns, see real-time geometry UDF previews, and leverage dynamic pattern modification capabilities as you create and modify molded parts faster than ever before.

##### 4. Weld Design and Analysis

New weld features, symbol annotations, and simulation enhancements enable you to design, document and analyze welded structures. You can analyze weldment models up to 10X faster!

##### 5. Enhanced Graphical Realism

Create stunning images and assembly animations using enhanced real-time photorealistic rendering. And with the added support for shadows and reflections, perspective views, and exploded-state animations, you can show your products in the best light possible. Pro/ENGINEER Advanced Rendering Extension now includes the mental images rendering engine for unsurpassed realism.



**INNEO** Authorised Dealer  
That's IT.

INNEO Solutions Ltd. Phone: +44 (0) 1564 793720  
Red Poll Barn Fax: +44 (0) 1564 793872  
Wootton Park Business Centre E-Mail: inneo-uk@inneo.com  
Alcester Road - Wootton Wawen Web: www.inneo.com  
Warwickshire - B95 6HJ - UK

## Seamless Integration of Applications

### 6. New Electromechanical Design Module

The new Pro/ENGINEER Spark Analysis Extension—another ‘first’ for PTC—automatically identifies where electrical sparks will cross gaps and creep along surfaces, helping you prevent product failures earlier in the design process. Additional enhancements in the Routed Systems UI will help you create wires, cables and ribbons faster—on the fly! You’ll route cables in 40% less time and pipes in 60% less time!

### 7. More Simulation Power

Machine simulation is easier than ever. Now you can drive slot motor components along curves, quickly create belts to account for kinematic and dynamic coupling, analyze dynamic gears, and model 3D contacts! Also, more high-end analysis capabilities are now accessible. Plus, with expanded support for heterogeneous units, improvements to icon and label displays, an intuitive dashboard UI for surface and volume regions, and support for materials plasticity, you’ll be able to verify and validate designs faster.

### 8. More Production Machining Power and Ease-of-Use

Production machining efficiency is better than ever with more intuitive workflows, an easy-to-use tool manager, and HTML-based process documentation. Create facing toolpaths up to 5X faster! You can quickly and easily duplicate toolpaths and leverage the process manager for turning operations, such as area turning, grooving and profile turning.

## A New Standard For CAD Interoperability

### 9. Improved Interoperability

With extended data exchange capabilities including free support for Autodesk Inventor® and SolidWorks®—you can gain greater leverage from imported designs. With industry leading, non-geometric data exchange capabilities, you can preserve 3D notes, annotations and metadata in neutral formats. And the new 3D import wizards and usability enhancements for AutobuildZ™ and Import DataDoctor™ will help you work more effectively and be more connected in a heterogeneous CAD world.

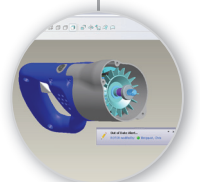
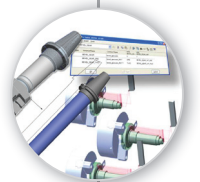
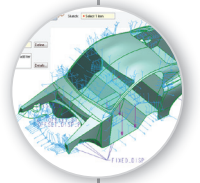
## First CAD Solution Enabled For Social Product Development

### 10. Social Product Development

New social product development capabilities will help you find the right people and resources at the right time. Pro/ENGINEER’s seamless integration to Windchill® ProductPoint®, which leverages Microsoft® SharePoint® social computing technologies, will help you find and reuse your design community’s collective knowledge as you improve process productivity.

**Get Pro/ENGINEER Wildfire 5.0 today and start designing without barriers!**

For more information, please visit: [www.PTC.com/products/proengineer](http://www.PTC.com/products/proengineer) or contact a PTC sales representative.



**INNEO** Authorised Dealer  
That's IT.

INNEO Solutions Ltd.  
Red Poll Barn  
Wootton Park Business Centre  
Alcester Road · Wootton Wawen  
Warwickshire · B95 6HJ · UK

Phone: +44 (0) 1564 793720  
Fax: +44 (0) 1564 793872  
E-Mail: [inneo-uk@inneo.com](mailto:inneo-uk@inneo.com)  
Web: [www.inneo.com](http://www.inneo.com)